

Supporting Higher Education in Refugee Resettlement

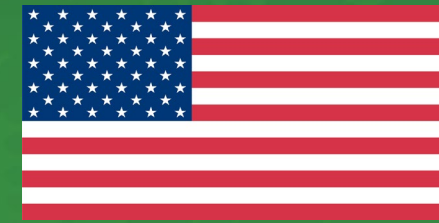
Building the capacity of colleges and universities to support resettlement.



PRESIDENTS' ALLIANCE | ON HIGHER EDUCATION AND IMMIGRATION



IDEAS
INCREASE & DIVERSIFY
EDUCATION ABROAD
FOR U.S. STUDENTS



CAMPUS ENGAGEMENT IN REFUGEE RESETTLEMENT:

PERSPECTIVES FROM THE SHERR PROGRAM

OCTOBER 4, 2023

*This session is being recorded. The recording will be available in the [IDEAS Library of Resources](#).

Supporting Higher Education in Refugee Resettlement

Speaking Today:

- **Moderator: Matt Brown**, SHERR Program Manager and Director, Global Programs, World Learning

- **Holly Herrera**, Section Chief, Domestic Resettlement, U.S. Department of State, Bureau of Population, Refugees, and Migration

- **Miriam Feldblum**, Executive Director, Presidents' Alliance for Higher Education and Immigration (SHERR)
- **Manal Sidi**, Program Manager, Welcome.US/Welcome Campus Network (SHERR)
- **Mariam Iskajyan**, SHERR Program Coordinator, Ethiopian Community Development Council (SHERR)

- **John Sunnygard**, Associate Provost, Global Learning and International Affairs, Western Kentucky University (IDEAS Grantee)

A special thanks to our webinar host, the IDEAS (Increase and Diversify Education Abroad for U.S. Students) Program. The IDEAS Program is a program of the U.S. Department of State with funding provided by the U.S. Government and supported in its implementation by World Learning.

Supporting Higher Education in Refugee Resettlement



*Perspectives from U.S. Department of State:
Bureau of Population, Refugees, and Migration*

Holly Herrera
Section Chief, Domestic Resettlement

Funded by the U.S. Department of State's Bureau of Population, Refugees, and Migration.



Supporting Higher Education in Refugee Resettlement

- U.S. Department of State:
 - Bureau of Population, Refugees and Migration
- Presidential Determination in FY 2024: 125,000 refugees
- Number of refugees admitted in FY 2023

Supporting Higher Education in Refugee Resettlement

- National Resettlement Agencies
- The capacity challenge
- Specialized projects that meet the needs of refugees and partner capacity needs

Reception and Placement Resettlement Agencies

BCS: Bethany Christian Services

CWS: Church World Service

ECDC: Ethiopian Community Development Council

EMM: Episcopal Migration Ministries

HIAS

IRC: International Rescue Committee

LIRS: Lutheran Immigration and Refugee Service

USCCB: United States Conference of Catholic Bishops

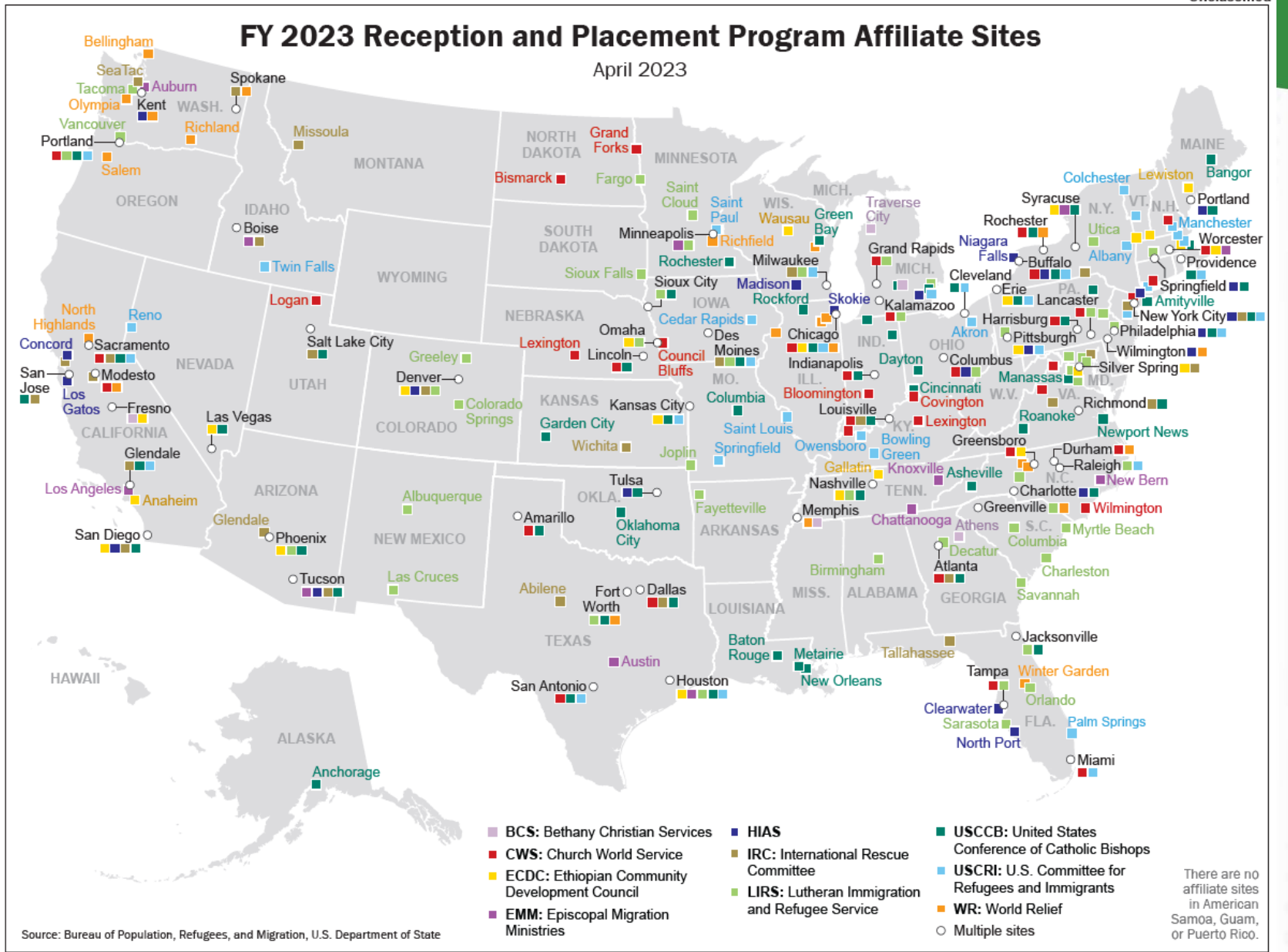
USCRI: U.S. Committee for Refugees and Immigrants

WR: World Relief

Supporting Higher Education in Refugee Resettlement

FY 2023 Reception and Placement Program Affiliate Sites

April 2023



Funded by the U.S. Department of State's Bureau of Population, Refugees, and Migration.



Supporting Higher Education in Refugee Resettlement



Perspectives from SHERR Consortium Lead:
World Learning

Matt Brown
SHERR Program Manager
Director, Global Programs

Funded by the U.S. Department of State's Bureau of Population, Refugees, and Migration.



Supporting Higher Education in Refugee Resettlement

About SHERR

Purpose: *Build the capacity of colleges and universities to support refugee resettlement*

- Expand the Welcome Campus Network (schools committed to engagement in resettlement)
- Support pathways of engagement with:
 - Communities of practice
 - Incentive grants
 - Webinars, trainings, etc.

- Student and non-student refugees
- 3-year program
- Consortium, 4 organizations
- Promote partnership with resettlement agencies
- Others in this space

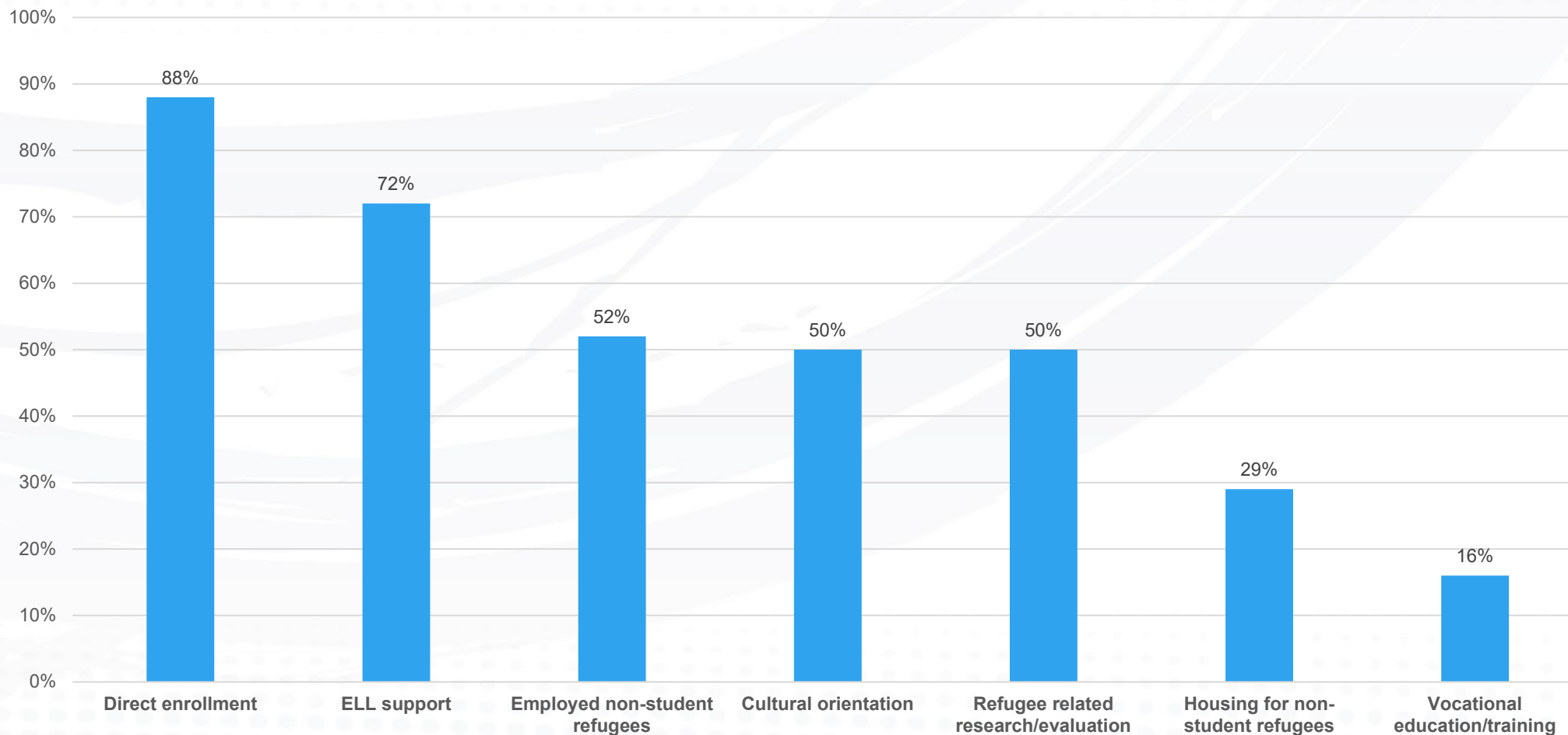
Supporting Higher Education in Refugee Resettlement

SHERR Needs Assessment Survey (July 2023)

- 97 schools, 41 states
- 46 schools: “Little/no experience” with resettlement
- 51 schools: “Some experience” with resettlement, including:
 - 11 community colleges
 - 18 minority-serving institutions
 - Urban, suburban, rural Settings
- 42 schools have collaborated externally, including with Resettlement Agencies

Supporting Higher Education in Refugee Resettlement

Types of Refugee Engagement Among Higher Education Institutions with Experience



Funded by the U.S. Department of State's Bureau of Population, Refugees, and Migration.



Supporting Higher Education in Refugee Resettlement

SHERR *TENTATIVE* PRIORITY ENGAGEMENT PATHWAYS

INITIAL

- English Language Learning and Career Support
- Service Learning/Volunteer Engagement
- Housing
- Refugee Educational Opportunities

FUTURE

- Access to Vocational Technical Training
- HEIs as Employers of Refugees
- Evaluation and Research

Supporting Higher Education in Refugee Resettlement



Perspectives from SHERR Consortium Member:
Presidents' Alliance on Higher Education and Immigration

Dr. Miriam Feldblum
Executive Director

PRESIDENTS' ALLIANCE | ON HIGHER EDUCATION
AND IMMIGRATION

Supporting Higher Education in Refugee Resettlement

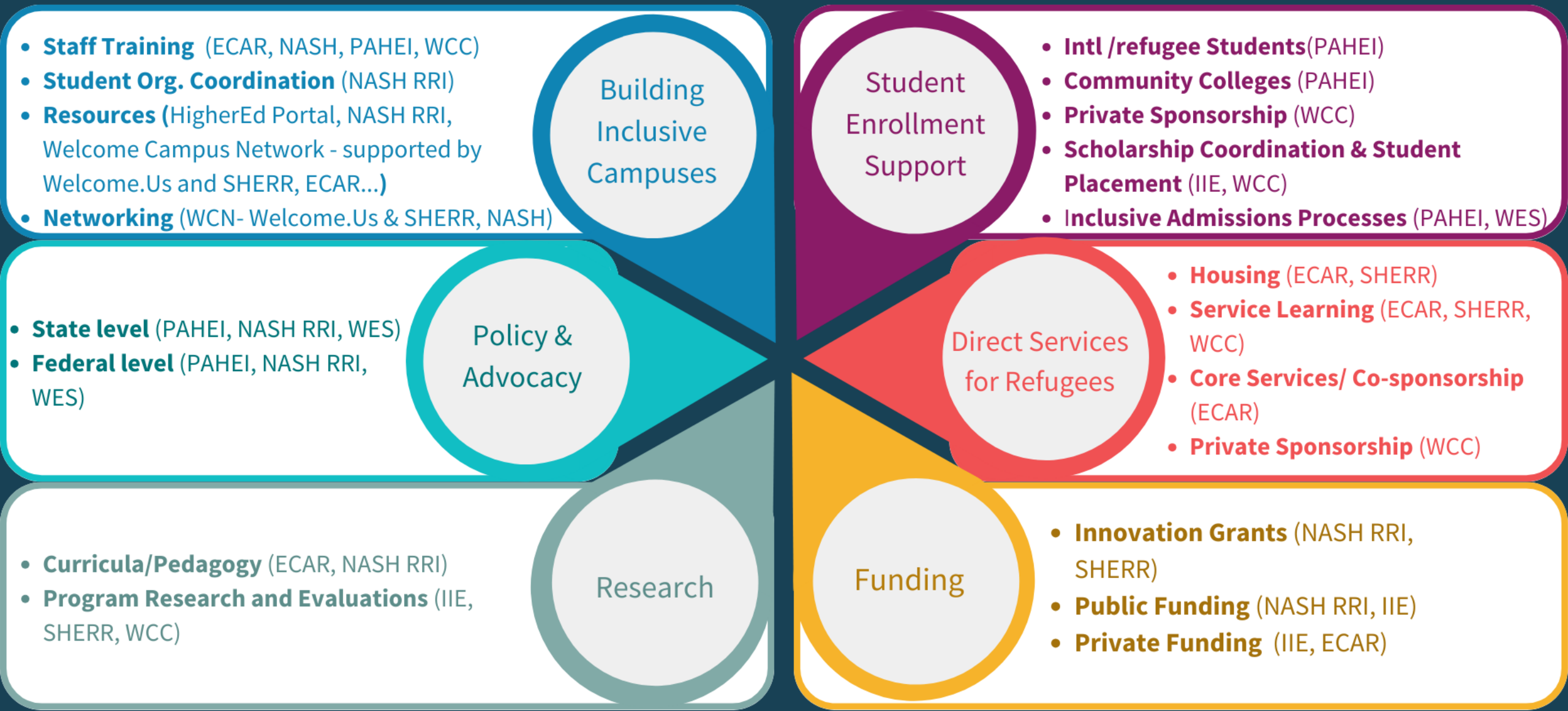
CURRENT PATHWAYS AND BARRIERS FOR REFUGEES FROM ABROAD

PATHWAYS	DESCRIPTION	KEY BARRIERS
P1-P3 Categories	Refugees are admitted to the U.S through existing refugee definitions, vulnerability-based resettlement and criteria	<ul style="list-style-type: none"> • Less than 1% of refugees worldwide are resettled • No immediate pathway to education
F-1 Visas	The main type of Student visa in the U.S and current avenue for refugees to enter the U.S as students	<ul style="list-style-type: none"> • Need to show financial support for the length of the program • Not a durable solution for protection • Limited access to PR & work authorization
Humanitarian Parole	A temporary and discretionary authorization to enter the U.S. for citizens from certain countries	<ul style="list-style-type: none"> • Requires a vetted U.S.-based supporter • Limited to two years and no path to PR • No immediate pathway to education

CURRENT BARRIERS FOR REFUGEES OR DISPLACED IN THE US

STATUS	DESCRIPTION	KEY BARRIERS
Resettled Refugees & Asylees	Refugees resettled in the U.S through existing refugee definitions, vulnerability-based resettlement and criteria	<ul style="list-style-type: none"> • Focus is on achieving economic self-sufficiency as soon as possible • No immediate pathway to education
Asylum seekers	Applied for asylum upon arrival in the US and still awaiting approval	<ul style="list-style-type: none"> • No access to federal financial aid, excluded or limited access to in-state tuition • No immediate pathway to education
TPS & DED	A temporary humanitarian protection that provide work permits and protection from deportation for certain noncitizens	<ul style="list-style-type: none"> • No access to federal financial aid, excluded or limited access to in-state tuition • No immediate pathway to education

Resources and partnerships to support U.S. Colleges and Universities



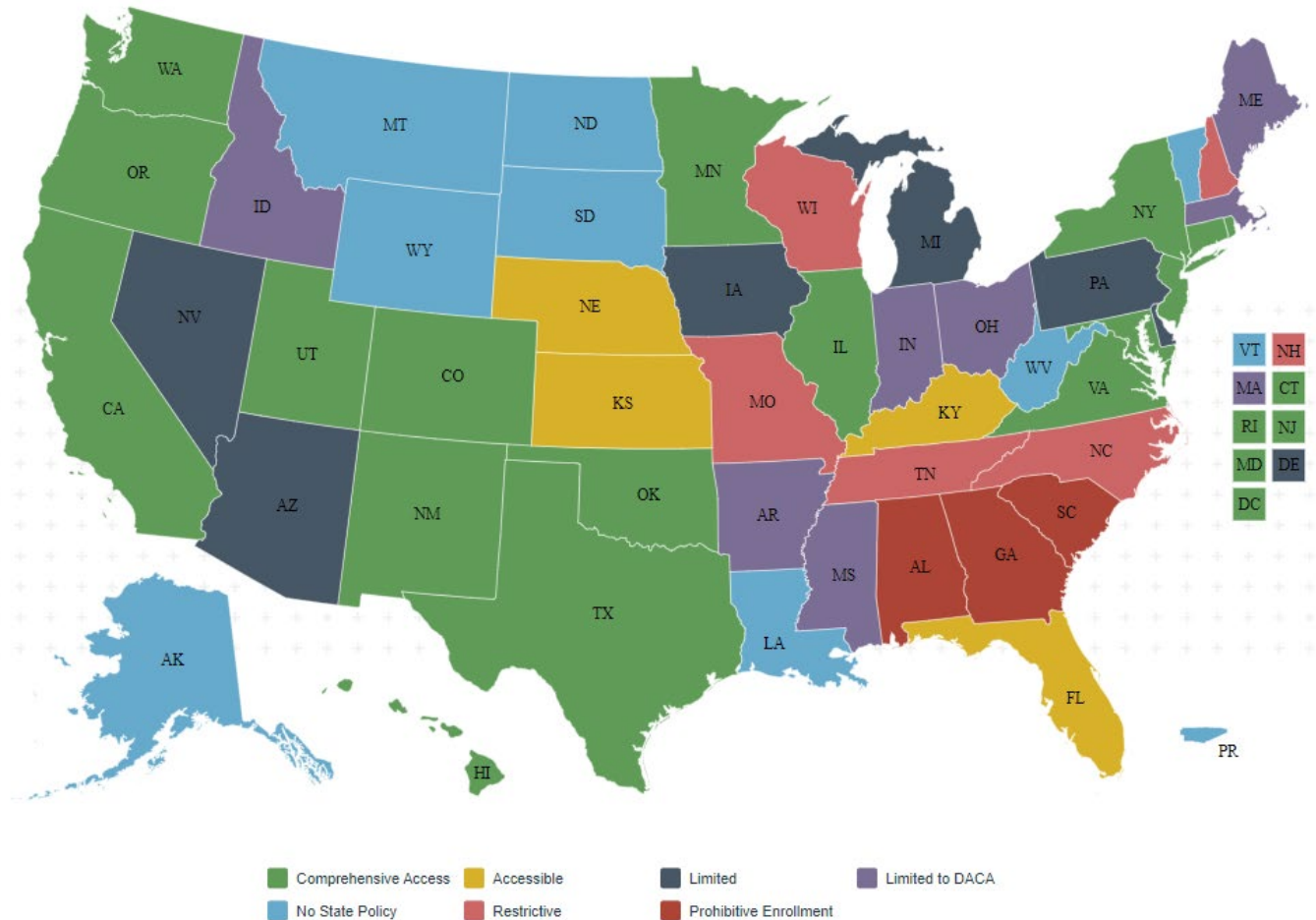
Supporting Higher Education in Refugee Resettlement

Higher Ed Immigration Portal

<https://www.higheredimmigrationportal.org/>

- Federal and state policies impacting immigrant, refugee, and international students
- Immigrant and international student enrollment data
- Economic contributions
- Communities of Practice
- Resources and effective practices
- Student and alumni stories
- Tools, directories, one-stop hubs

Tuition & Financial Aid Equity for Undocumented Students



Supporting Higher Education in Refugee Resettlement



Perspectives from SHERR Consortium Member:
Welcome.US, Welcome Campus Network

Manal Sidi
Program Manager



Supporting Higher Education in Refugee Resettlement

- Welcome.US
- Welcome Campus Network
 - Members meet twice a month and discuss information and best practices. Past meetings have focused on:
 - Current developments in U.S. refugee and asylum policy presented by RCUSA coalition
 - How to become involved in Welcoming Week presented by Welcoming America
 - Learning more about Refugee Resettlement Academy presented by Hekmatullah Latifi, Assistant Director of Refugee Resettlement Academy at USCCB
- If interested in joining, or for more information, please email: manal@welcome.us



Supporting Higher Education in Refugee Resettlement

WELCOME CAMPUS NETWORK

Through the Welcome Campus Network, Welcome.US amplifies the work of higher education institutions in welcoming and supporting newcomers seeking safety from across the globe, which includes providing scholarships, housing units, community sponsorship, and pathways to education to thousands of refugees and their families, as well as other acts of welcome.



Funded by the U.S. Department of State's Bureau of Population, Refugees, and Migration.



Supporting Higher Education in Refugee Resettlement



Perspectives from SHERR Consortium Member:
Ethiopian Community Development Council

Mariam Iskajyan
Program Coordinator, SHERR



Supporting Higher Education in Refugee Resettlement

- ECDC was founded in 1983 and is committed to empowering a network of organizations founded and/or led by former refugees and immigrants
- ECDC has been a national resettlement agency (RA) since 1991, having resettled over 76,200 individuals from across the world
- ECDC serves as a bridge between SHERR and the nine other national RAs and 300+ local affiliates across the United States



Supporting Higher Education in Refugee Resettlement

Partnerships between colleges/universities and RAs:

- help build the capacity, diversity, and resiliency of the resettlement community
- facilitate successful outcomes for refugees

Example: Ready for American Hospitality (RAH) is a collaborative training program between the University of Denver (DU) and ECDC's African Community Center (ACC) in Denver



Supporting Higher Education in Refugee Resettlement



Perspectives from Western Kentucky University:

John Sunnygard

Associate Provost

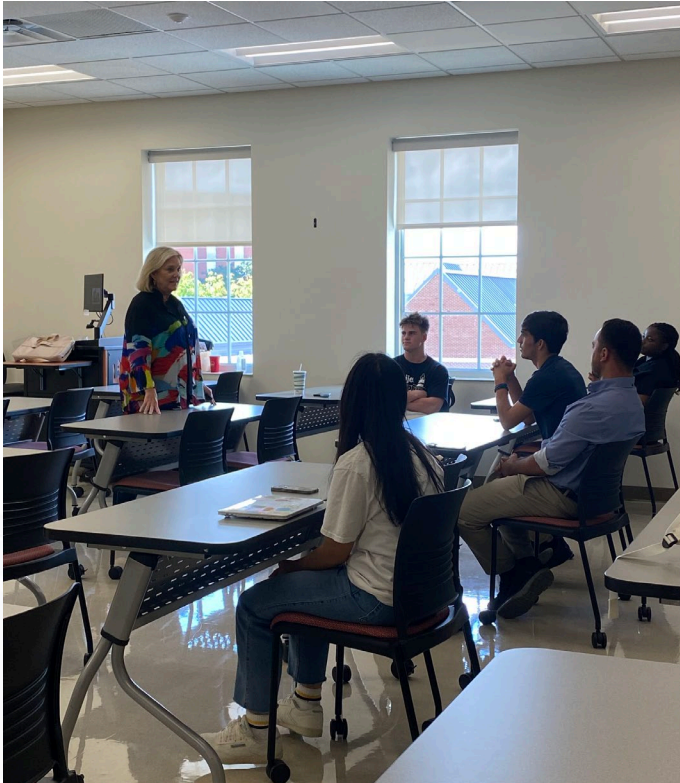
Global Learning and International Affairs



Funded by the U.S. Department of State's Bureau of Population, Refugees, and Migration.



Supporting Higher Education in Refugee Resettlement



Our Community: Bowling Green; Refugees; Local Support Services



Funded by the U.S. Department of State's Bureau of Population, Refugees, and Migration.



PRESIDENTS' ALLIANCE | ON HIGHER EDUCATION AND IMMIGRATION



Empowering refugees and immigrants since 1983



Supporting Higher Education in Refugee Resettlement



2021 IDEAS Grant – C2C – Counties to Countries

- Explore Senegal
- Coffee, Chocolate, and Sustainability – Costa Rica
- Mystic Landscapes of the Emerald Island - Ireland



Funded by the U.S. Department of State's Bureau of Population, Refugees, and Migration.



PRESIDENTS' ALLIANCE | ON HIGHER EDUCATION AND IMMIGRATION



Empowering refugees and immigrants since 1983



Supporting Higher Education in Refugee Resettlement

It started with a tornado – WKU and Resilient Refugee Program

- KISPP – Kentucky Innovative Scholarship Program
- Consolidate refugee support in WKU Global unit
- IPAS – International Pathway to Academic Success



Supporting Higher Education in Refugee Resettlement

It's What You've Got: Challenges and Lessons

- Refugees not international students
- Financial aid
- Campus cultural awareness



Supporting Higher Education in **Refugee Resettlement**

Global Learning for all! Integrating student learning into our refugee support work

- Peer-to-peer navigators
- Certificates in Forced Migration Studies
- Refugee Health Seminar



Supporting Higher Education in Refugee Resettlement

Support at the Intersection of Higher Education and Refugee Resettlement

1. Every Campus A Refuge
2. National Association of System Heads-Refugee Resettlement Initiative (NASH/RRI)
3. Higher Ed Immigration Portal, Presidents' Alliance on Higher Education and Immigration
4. Qatar Scholarship for Afghan Project (QSAP/IIE)
5. Welcome Campus Network (Welcome.US)
6. Cultural Orientation Resource Exchange (CORE, IRC)
7. Switchboard (IRC)
8. Refugee Welcome Collective (CWS)
9. Refugee Housing Solutions (CWS)
10. Welcome Corps on Campus
11. Supporting Higher Education in Refugee Resettlement (SHERR)



IDEAS
INCREASE & DIVERSIFY
EDUCATION ABROAD
FOR U.S. STUDENTS

Stay in touch with the IDEAS Program!

Email

IDEAS@worldlearning.org

Website

StudyAbroadCapacityBuilding.org

LinkedIn

<https://www.linkedin.com/company/ideas-program>

Supporting Higher Education in
Refugee Resettlement

THANK YOU!

Matt Brown: matt.brown@worldlearning.org

Miriam Feldblum: miriam@presidentsalliance.org

Manal Sidi: manal@welcome.us

Mariam Iskajyan: miskajyan@ecdcus.org